

# YUMI PRO DIGITAL PLAYER MP4 User Manual



V 4.05

This player is a new generation portable digital audio & video products. Support multi-format music files, such as MP1, MP2, MP3, WMA, WMV, ASF, WAV, AMV, ACT. With such a player - nice voice, high reliability and splendid design, you can enjoy yourself in the digital music world.

## General preview

Full-color TFT screen.

- Support multi-format music files.  
Such as MP1, MP2, MP3, WMA, WMV, ASF, WAV, AMV, ACT. music format files.
- Cartoon movie function  
Play AMV format movie and music files.
- Browse pictures  
Browse JPG, BMP format pictures.
- E-book  
Display TXT format files for reading.
- FM stereo radio  
Search stations both automatically and manually. Save the different frequency stations up to 20 channels in each system ( 40 channels in total ).
- USB drive without driver  
No need management programs, you can operate directly through “moveable disk” in “My PC”, No need to install driver programs in the system higher than Windows2000 system.
- “Private Space” Memory management menu  
Regards the memory of the player as a USB drive, users may divide the memory into two parts in any proportion by its accessory tools. One of them can be encrypted as a “ Private Space ” which needs password to access to. ( If users do not encrypt both parts, the player may be treated as two parts of USB drive )  
,
- Record / Repeat  
Using the microphone, you can record voice and save them as WAV or ACT format files. Repeat a segment of the files with comparison; realize the real digital repeating function.
- 7 kinds of equalizer menu  
Natural, Rock, Popular, Classic, Soft, Jazz, Bass.
- Multi-play menu  
Normal menu, Repeat single song, Folder play, Folder repeat, Repeat all, Random play, Browse play.

- **Automatically switch off**

You can set sleeping menu and save power menu.

- **Cartoon menu**

Several kinds of cartoon menu with character on them, the interface looks wonderful.

## **Declaration**

- Thank you for using our portable digital products□

Before you use the play, please read this user manual carefully, and use it in the right way.

- The content in this manual may be changed without any pre-cautions.

Some features and functions may be changed without further announcement.

If the player is a little bit different from the manual, please log on our website for latest information.



1. line in socket and earphone socket as show.



line in operation

Insert CD PLAYER's I/O port with a line-in cable.

1. Setup →Record Type→MP3 Music Rec.

2. Record→Record from→Audio Input.

Line-in Function: retrieve MP3/WMA files from CD PLAYER with a line-in cable connecting between CD and MP4.



General review	1	<b>Error! Bookmark not defined.</b>
Delcaration	3	
Get to know your player		<b>Error! Bookmark not defined.</b>
Display screen		<b>Error! Bookmark not defined.</b>
Battery		<b>Error! Bookmark not defined.</b>
Basic function	5	<b>Error! Bookmark not defined.</b>
Enter menus		6
Browse operation		<b>Error! Bookmark not defined.</b>
Enter different function menus		6
Button operation	7	
Movie menu		7
Music menu and play menu		8
Record menu		8
FM menu		8
Browse photos		9
E-book		9
Play movies		<b>Error! Bookmark not defined.</b>
Simply operation		10
Movie menu		10
Play music		<b>Error! Bookmark not defined.</b>
Equalizer menu		<b>Error! Bookmark not defined.</b>
Lyric display isochronously□Kara-OK function□		11
Voice recording		<b>Error! Bookmark not defined.</b>
Record under “ Record menu”		11
Select recording tyep		12
Voice menu		<b>Error! Bookmark not defined.</b>
Convert ACT fromat files into WAV format ones	13	
FM radio	14	
Browse photos	15	
E-book	15	
System setting	16	
How to enter		16
Fetures introduction		16
How to use		<b>Error! Bookmark not defined.</b>
USB drive function	18	
Create a new folder		18
Other setting		<b>Error! Bookmark not defined.</b>
Select different items□ Stop-submenu□		19
Delete files□Stop-submenu□		19
Repeat menu□Play-submenu□		20
Select music menu		21
Playing speed□Play-submenu□		21
Repeat menu□Play-submenu□		21
Repeat times□Play-submenu□		22

Repeat interval□Play-submenu□ .....	23
Secret space <b>Error! Bookmark not defined.</b>	
Troubleshooting <b>Error! Bookmark not defined.</b>	
Specification <b>Error! Bookmark not defined.</b> <a href="#">-1</a>	
Convert video files into AMV format files.....	34-2

# Get to know your player

## Battery

Built-in Li-polymer rechargeable battery. You can charge it using both USB power supplier and adapter charger.





- Switch off when you charge the battery.
- It display  when the battery fully charged.
- When the battery is nearly used up, the icon  of the battery will be empty, charge your battery in time.
  - Don't place your play in high temperature or high wet surroundings. Keep away from fire.

## Basic function

### Enter Menus

Press Menu button to enter the menu you like. There are 3 types of menu, they are Main-menu ( Long time press **Menu** button to enter ), Play-submenu ( Press **Menu** button to enter ) and Stop-submenu ( Press **Menu** button to enter ).

### Browse operation

- Browse and Select a song, or a menu.  
Press  button for last choice, Press  button for next choice.
- Fast forward or backward when playing a song.  
Long time press  button for fast-backward, long time press  button for fast-forward.

### Enter different function menus

Enter a different function menu from the main menu.

Main-menu  ( Long time press the **Menu** button when it is in other menus )

01      Movie

02      Music

03      Record

04      Voice

- 05 FM□
- 06 Photo browse□
- 07 E-book
- 08 System
- 09 Enter USB menu through connecting with PC□

- Adjust volume

Press the **VOL** button first, then press **⏮** button to decrease the volume, Press **⏭** button to increase the volume.

- Adjust option

Press **⏮** or press **⏭** browse the item files.

- On/Off

Press and hold the **Play** button for electrical system power on/off.

- Press **Play** button: Play or stop ( Pulse when recording ), Exit from a submenu.

## Buttons operation

### Button function introduction□

**⏮** stand for **Last**, **⏭** stand for **Next**, **VOL** for **volume**.

### Movie menu

Button	Operation	Stop status	Play status	Stop-submenu
<b>Play</b>	Long press	Switch off	Switch off	Switch off
	Press	Play	Stop	Exit from menu
<b>Menu</b>	Long press	Enter Main-menu	Enter Main-menu	Enter Main-menu
	Press	Enter Stop-submenu	X	Confirm the choice or further step
<b>Next</b>	Press	Next song	Play next song	Select a submenu
	Long press	forward browse continuously	Fast forward	forward continuously
<b>Last</b>	Press	Last song	Play last song	Select a submenu

	Long press	Backward browse continuously	Fast backward	backward continuously
--	------------	------------------------------	---------------	-----------------------

### Music menu and Play menu

Button	Operation	Stop status	Play status	Play-submenu	Stop-submenu
<b>Play</b>	Long time press	Switch off	Switch off	Switch off	Switch off
	Press	Play	Stop	Exit from menu	Exit from menu
<b>Menu</b>	Long time press	Enter Main-menu	Enter Main-menu	Enter Main-menu	Enter Main-menu
	Press	Enter Stop-submenu	Enter Play-submenu	Confirm your choice and enter it	Confirm your choice and enter it
<b>Next</b>	Press	Next song	Play next song	Select a submenu	Select a submenu
	Press and hold	Browse forward continuously	Fast forward	Move forward continuously	Move forward continuously
<b>Last</b>	Press	Last song	Play last song	Select a submenu	Select a submenu
	Press and hold	Browse backward continuously	Fast backward	Move backward continuously	Move backward continuously

### Record menu

Button	Operation	Stop status	Record status
<b>Play</b>	Long press	Switch off	Stop recording
	Press	Start recording	Pause recording
<b>Menu</b>	Long press	Enter Main-menu	Save recorded file
	Press	Enter Record-submenu	X

### FM menu

Button	Operation	FM radio status	FM submenu
--------	-----------	-----------------	------------

<b>Play</b>	Long time press	Switch off	Switch off
	Press	Next channel	Exit from menu
<b>Menu</b>	Long time press	Enter Main-menu	Enter Main-menu
	Press	Enter a submenu	Confirm your choice and enter it
<b>Next</b>	Press	Increase by step 100KHz <input type="checkbox"/> or stop searching	Select a submenu
	Press and hold	Increase step by step 100KHz automatically	Move forward continuously
<b>Last</b>	Press	Decrease by step 100KHz <input type="checkbox"/> or stop searching	Select a submenu
	Press and hold	Decrease step by step 100KHz automatically	Move backward continuously

### Browse pictures

Button	Operation	Stop status	Play status
<b>Play</b>	Long press	Switch off	Switch off
	Press	Start	Stop
<b>Menu</b>	Long press	Enter Main-menu	Enter Main-menu
	Press	Enter a submenu	X
<b>Next</b>	Long press	Move forward continuously	forward continuously
	Press	Step forward	Step forward
<b>Last</b>	Long press	Move backward continuously	Backward continuously
	Press	Step backward	Step backward

### E-book

Button	Operation	Menu status	Play status
<b>Play</b>	Long press	Switch off	Switch off
	Press	Start	Stop
<b>Menu</b>	Long press	Enter Main-menu	Enter Main-menu
	Press	Enter a submenu	Enter a submenu
<b>Next</b>	Long press	Move forward continuously	forward continuously
	Press	Step forward	Step forward
<b>Last</b>	Long press	Move backward continuously	Backward continuously
	Press	Step backward	Step backward

## Play movies

### Simply operation

1. Connect earphone Connect the earphone plug into the jack on the player.	2. Playing music Long press the <b>Play</b> button to switch on the player, enter the music menu, then press the <b>Play</b> button to start playing a music.
3. Select a music <b>Last</b> button □ Select the last song <b>Next</b> button □ Select the next song	4. Volume controller Press the <b>VOL</b> button first, then press <b>⏮</b> button to decrease the volume, Press <b>⏭</b> button to increase the volume.

### Movie Menu

1. Movie menu interface.	2 □ Press <b>Menu</b> button to enter the Play-submenu
3 □ Press <b>Menu</b> button to quit submenu	4 □ Press <b>Play</b> button to start playing files.

## Play music

### Equalizer menu

2. When the player is playing music	2 □ Press <b>Menu</b> button to enter the Play-submenu
3 □ Press <b>Next</b> button to select Equalizer menu.	4 □ Press <b>Menu</b> button to ether Equalizer menu.
5 □ Press <b>Next</b> button to select □ and press Menu button to confirm.	6 □ Equalizer introduction □ EQ □ □ Natural □ □ Rock □ □ Pop □

	<input type="checkbox"/> Classical <input type="checkbox"/> <input type="checkbox"/> Soft <input type="checkbox"/> <input type="checkbox"/> Jazz <input type="checkbox"/> <input type="checkbox"/> DBB <input type="checkbox"/>
--	--

## Lyric display isochronously ( Kara-OK function )

This player supports “.LRC” lyric files, and lyrics may be displayed isochronously while playing music.

How to use lyric file ?


Save the lyric file with the same name as that of the corresponding music file.

For example

Music file name  Andy-water.mp3

Lyric file name  Andy-water.lrc

How to get to know whether there is lyric or not?

The mark  displays on the bottom-right corner in music menu, if there is a lyric file matches the music file.

How to display lyric?

1 <input type="checkbox"/> Find a lyric matches the music.	2 <input type="checkbox"/> Long press <b>Menu</b> button to enter lyric interface.
3 <input type="checkbox"/> Display the lyric.	4 <input type="checkbox"/> Press <b>Menu</b> button to return music menu.

## Voice recording

Please keep enough power during recording.

This play supports saving up to 255 files in each item.

### Record under “Record menu”

1 <input type="checkbox"/> Enter main menu.	3. Press <b>Next</b> button to select record menu.
3 <input type="checkbox"/> Press <b>Menu</b> button to enter record menu.	4 <input type="checkbox"/> Press <b>Play</b> button to start recording.

5 <input type="checkbox"/> After recording <input type="checkbox"/> long press <b>Play</b> button to save the recorded file. And then, next recording is available.	
---	--



The recorded files is saved in present item of “Record stop submenu / main disk item”.



If the screen displays “Full”  it means there is no capacity for recording new recorded files. Please delete some files to empty capacity.



If the screen displays “Item full”  it means there are 99 recorded files in this item, please change to another item.

Only **Play** and **Menu** button are available during voice recording.

## Select recording file format

1 <input type="checkbox"/> Record stop interface.	2 <input type="checkbox"/> Press <b>Menu</b> button to enter record-submenu <input type="checkbox"/> Item in main disk.
3 <input type="checkbox"/> Press <b>Next</b> button, select “type of recording”-submenu Type of recording <input type="checkbox"/>	4 <input type="checkbox"/> Press <b>Menu</b> button to enter this item. Recording type interface <input type="checkbox"/>
5 <input type="checkbox"/> Press <b>Next</b> to select recording type.	6 <input type="checkbox"/> Press <b>Menu</b> button to confirm your choice.
7 <input type="checkbox"/> Press <b>Play</b> button to start recording.	8 <input type="checkbox"/> Type of recording <input type="checkbox"/> High quality recording: WAV format. Long time recording: ACT format, normal quality. High quality voice control: WAV format ( the player pauses automatically when no voice is received. ) Long time voice control: ACT format.

## Voice Menu

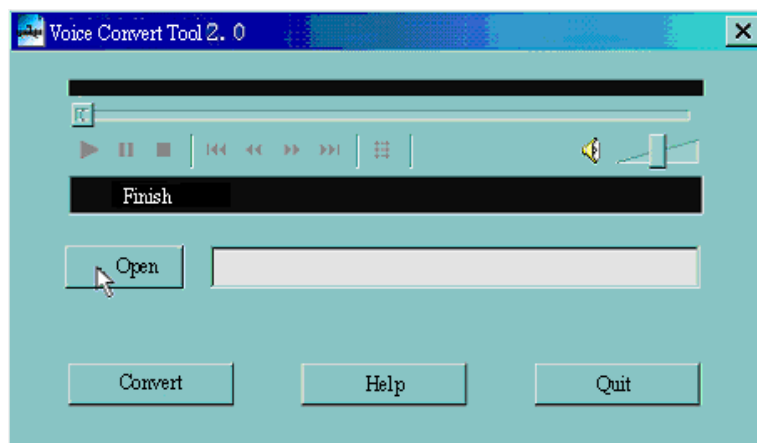
1 <input type="checkbox"/> Enter main menu	2 <input type="checkbox"/> Press Next button to select “voice menu”.
--	--

3 <input type="checkbox"/> Press <b>Menu</b> button to enter the voice menu interface.	4 <input type="checkbox"/> Press <b>Play</b> button again to start playing.
5 <input type="checkbox"/> Select a recorded file. <b>Last</b> button <input type="checkbox"/> Select last file. <b>Next</b> button <input type="checkbox"/> Select next file.	6 <input type="checkbox"/> Control volume <input type="checkbox"/> Press the <b>VOI</b> button first, then press ◀ button to decrease the volume, Press ▶ button to increase the volume.

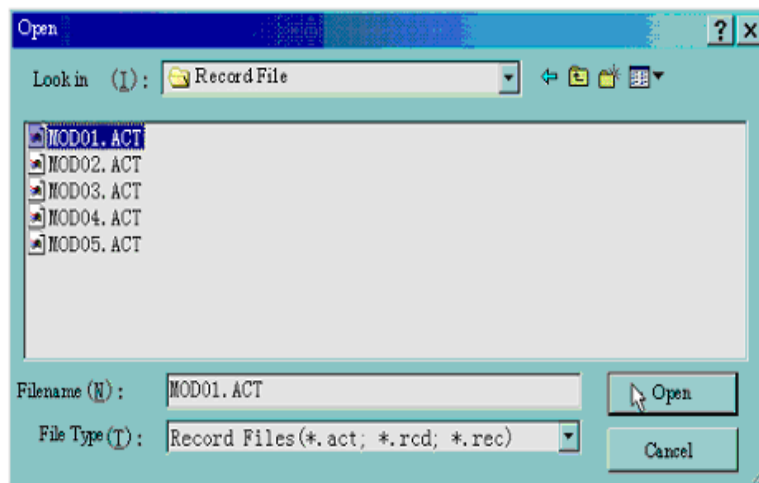
## Convert ACT format voice recording files into WAV format ones

The ACT format files can be converted to WAV format files through the accessory installation tools.

1. Run "Sound Converter" files, click "Open" icon.



2. Select a ACT file.




3. Click "Convert" icon to start converting.



Except for this converting function above, this tool can also play WAV and MP3 format files.

## FM radio

1 <input type="checkbox"/> Enter the main menu.	2 <input type="checkbox"/> Press <b>Next</b> button to select "FM menu".
3 <input type="checkbox"/> Press <b>Menu</b> button to enter "FM menu".	Search automatically: Press <b>Last / Next</b> button for more than 2 second, player searches at the step of 100KHz backward/forward until catch a station. Just press <b>Last / Next</b> button to stop searching.
4 <input type="checkbox"/> Inching adjust <input type="checkbox"/> Press <b>Last</b> button <input type="checkbox"/> Step backward at 100KHz Press <b>Next</b> button <input type="checkbox"/> Step forward at 100KHz	5 <input type="checkbox"/> Save searched out frequency <input type="checkbox"/> Press Menu button to enter FM submenu.  and then press <b>Menu</b> to save it.
6 <input type="checkbox"/> Select a saved station frequency for listening. If there are more than one stations being saved, you can press <b>Play</b> button to listen to station one by one.	7 <input type="checkbox"/> Control volume <input type="checkbox"/>  Press the <b>VOL</b> button first, then press <b>⏪</b> button to decrease the volume, <b>⏩</b> Press button to increase the volume.

<p>9 Built in recording</p> <p>Press <b>Menu</b> button to enter FM submenu, select recording menu.</p>	<p>Notice</p> <p>There are two bands, “Ordinary band” FM 87 - 108MHz and “Japanese band” FM 76 – 90MHz</p> <p>Press <b>Menu</b> button to enter FM submenu press Next button to select a proper band</p> <p>“” icon displays on the screen when it is stereo radio.</p>
---	--



You can save up to 20 channels in both “Ordinary band” and “Japanese band”.



Delete saved stations, you can refer to “Delete files” item.

## Photo browse

2. Enter main menu	2. Press <b>Next</b> button to select “Photo browse”.
3. Press <b>Menu</b> to enter “Photo browse”	4. Press <b>Play</b> button to enter Photo browse menu. Press <b>Play</b> button again to quit. <b>Last</b> button Select last file <b>Next</b> button Select next file
5. Press <b>Menu</b> button to enter photo browse submenu	6. Press <b>Next</b> button, select “browse photo” submenu
7. Press <b>Menu</b> button to enter playing setting interface.	8. Enter automatic playing submenu.

## E-book

1. Enter main menu	2. Press <b>Next</b> button to select “Ebook”
--------------------	---

3. Press <b>Menu</b> button to enter “E-book”	4. Press <b>Play</b> button to enter E-book menu. Press Play button again to quit. <b>Last</b> button <input type="checkbox"/> Select last file <b>Next</b> button <input type="checkbox"/> Select next file
5. Press <b>Menu</b> button to enter E-book submenu.	6. Press <b>Next</b> button, select “E-book ” submenu item.
7. Press <b>Menu</b> button to enter playing setting interface.	8. Enter automatic playing submenu.
Notice <input type="checkbox"/> Press <b>Menu</b> button to enter the next submenu, when playing E-book.	Press <b>Next</b> button, select “Select file” submenu.
Press <b>Menu</b> button to enter E-book submenu	

## System setting

### How to enter

1 <input type="checkbox"/> Enter main menu	2 <input type="checkbox"/> Press Next button to select “System” <input type="checkbox"/>
3 <input type="checkbox"/> Press Menu button to enter “System”	

### Features introduction

Recording time	Set the voice recording date and time
Screen setting	Set the screen brightness <input type="checkbox"/> and the automatic screen power off time. The player’s screen will go dark without operation after the time ( Unit: second ) you set
Setting language	Set a language
Background	There are 4 kinds of background for choice
Screen protection picture	Set different pictures for screen protection
Automatic power off	Set a automatic power off time. The player will power off automatically after the time you set.
Repeat setting	Set working status when repeating.

Link computer	Only for “Secret space ” function
Storage status	Check memory capacity and free volume
Firmware upgrade version	Display firmware upgrade version of this player
Exit	Exit from present interface

## How to use

### ○ “Record period of time” setting

1 <input type="checkbox"/> System setting interface.	2 <input type="checkbox"/> Press <b>Menu</b> button to enter record period of time. Record time:
3 <input type="checkbox"/> Press <b>VOL</b> to select Year, Month, Date ... “Year” column flash <input type="checkbox"/>	4 <input type="checkbox"/> Press <b>Next</b> button to increase number <input type="checkbox"/> Press <b>Last</b> button to decrease number <input type="checkbox"/>
5 <input type="checkbox"/> After setting, press <b>Menu</b> button to exit.	

### ○ “LCD set” setting

1 <input type="checkbox"/> System interface	2 <input type="checkbox"/> Press Next button to select “LCD set” <input type="checkbox"/>
3 <input type="checkbox"/> Press Menu button to enter	4 <input type="checkbox"/> Press Next/Last button to adjust Notice <input type="checkbox"/> When set screen protection menu and black screen menu, you can only select one of them. Press Menu button to confirm entering submenu, the operation are the same as Brightness adjust.
5 <input type="checkbox"/> Press <b>Menu</b> button	6. After adjusting, press Menu button to exit.

### ○ “Select language” setting

Refer to “EQ menu” setting.

### ○ “background” setting

Refer to “LCD set” setting.

There are 4 types for selecting.

NO.1: Green background with yellow characters.

NO.2: Black background with yellow characters.

NO.3: Green background with yellow characters.

NO4.: Orange background with black characters.

- “Screen protection picture” setting  
Refer to “LCD set” setting.
- “Switch off setting”  
Refer to “LCD set” setting.
- “Repeat set”  
Refer to “EQ menu” setting  
Notice □  
“Manual menu”: Repeat from A to B.  
“Automatic menu”: Repeat sentences automatically.
- “Link computer”  
Refer to “EQ menu” setting
- “Storage status”  
The number stands for the total capacity, percentage stands for used capacity proportion.
- “Firmware version”  
Display the player’s present firmware version.

## Use as a USB drive

This player can be used as a standard USB drive □ support Windows98 □ need install drive program □ Windows 2000 above □ no need install drive program □ system □ Mac OS X 10.3 and above □ Linux Red hat 8.0 and above.

This player support USB power supply □ playing without battery. Under the “waiting status” □ press **Menu** button □ return to main menu □ and select the menu what you want and enter it.

This player support Suspend menu.

How to connect your PC? Switch on the player, and plug the USB cable, then the player enter the menu 1 as below.

On connect the PC, there are 3 kinds of display menus as follows:

1 □ Waiting status.	2 □ Downloading
3 □ Uploading	

## Create a new folder

This player can recognize 99 customized folders in the USB drive.

## Other setting

### Select different items □ Stop sub-menu □

Customer can save different files in different folders □ You have to definite the folder in advance □ in order to sort and manage the files. This player support 99 folders.

1 □ In Stop interface. □ For example, in music menu, record and play can select a item. □	2 □ Press <b>Menu</b> button to enter Stop-submenu.
3 □ Press <b>Menu</b> button again to enter what you choice.	4 □ <b>Press</b> Next or <b>Last</b> button to select.
5 □ Press <b>Menu</b> button to confirm your choice.	

○ **Notice** □ You can set music menu, record menu and play menu in different independent folders. That is, the 3 menus can be save in different menu.

### Delete files □ Stop-submenu □

Under music, voice, movie and FM menu, you can delete files or station frequency.

1 □ Under stop menu. □ There isn't a interface in FM status □	2 □ Press <b>Menu</b> button to enter stop-submenu.
3 □ <b>Press</b> <b>Next</b> or <b>Last</b> button and select "delete files" in the menu.	4 □ Press <b>Menu</b> button the enter delete interface.
5 □ Press <b>Menu</b> button to enter next submenu.	6 □ <b>Press</b> Next <b>button</b> to confirm, start deleting.
7 □ Press <b>Menu</b> button to enter a menu and select "delete files" □ "delete all" or "Exit".	8 □ After selecting, press <b>Menu</b> Button.

"delete all" means, delete all the relative files in present folder. □ For example, now you are in music menu, "delete all" can delete all music files, but remain the record files. □

FM delete interface is much simple, only the 1<sup>st</sup> 3 steps, and delete saved stations

frequency.



Notice □ When you delete files in you computer, please make sure you must pull out the USB cable after it display the player interface, otherwise, the files may not to be deleted.

### Repeat menu □ Play sub-menu □

When you play/stop music and play voice recording file, you can select different playing menu such as repeat, shuffle, etc.






The 3<sup>rd</sup> item in Stop menu is “repeat menu”, The player plays according your selection.

1. Stop music	2 □ Press <b>Menu</b> button to enter Play-submenu.
3 □ Press <b>Next</b> button to select “Repeat menu” item.	4 □ Press <b>Menu</b> button to enter “Repeat menu” item.
5 □ Press <b>Next</b> button to select, then press Menu button to confirm.	




Notice □ In music menu, you can set repeat menu, no matter the player is in stop music submenu or play music submenu. □ Once you set one, it means you set the whole play menu. The operation method is the same.


#### ○ REPEAT

 Normal	Play music files in sequence until the end of folder.
 Repeat One	Repeat one music file.
 Folder	Play all music files in the folder
 Repeat Folder	Repeat all music files in the folder
 Repeat All	Repeat all music files.

#### ○ SHUFFLE

 Random	Play music files in present folder randomly.
--	--

#### ○ INTRODUCTION

 Introduction	Play the beginning 10 seconds of music files in sequence
--	--

## Select music menu

1 <input type="checkbox"/> Music stopping.	2 <input type="checkbox"/> Press Menu button to enter Play-submenu
3 <input type="checkbox"/> Press Next button to select "Select music" item.	4 <input type="checkbox"/> Press Menu button to enter "Select music" item. Select a song <input type="checkbox"/>

## Play speed Play sub menu


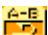
When you play music  [only available for MP3 files](#)  and play record files, you can choose different kinds of speed. ( fast or slow)  but the tone is the same as original.


1 <input type="checkbox"/> Playing music	2 <input type="checkbox"/> Press <b>Menu</b> button to enter Play-submenu.
3 <input type="checkbox"/> Press <b>Next</b> button to select "Playing speed" item.	4 <input type="checkbox"/> Press <b>Menu</b> button to enter "Playing speed" item. Play speed choice <input type="checkbox"/>
5 <input type="checkbox"/> Press <b>Next</b> button to increase playing speed, press Last button to decrease playing speed.	6 <input type="checkbox"/> Notice <input type="checkbox"/> All the music playing speed is the same till next setting.

## Repeat menu Play sub menu

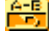

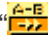
- Enter via playing submenu

- A-B repeat

1 <input type="checkbox"/> Playing music or voice recorded fine	2 <input type="checkbox"/> Press <b>Menu</b> button to enter Play-submenu.
3. Press <b>Next</b> button to select "Repeat menu" item.	4. Press <b>Menu</b> button to enter "Repeat menu". Repeat menu <input type="checkbox"/>  Mark A flash in repeat icon  <input type="checkbox"/> waiting for beginning A confirmation <input type="checkbox"/>
5. Press <b>Next</b> button <input type="checkbox"/> Confirm Beginning point A.	6. Press <b>Next</b> button <input type="checkbox"/> confirm End point B. Then the icon  appear without

Then the repeat icon  flash waiting for confirmation of End point B.	flashing. The player start repeating between the segment A to B for the times you set. You can re-set by press Last button. For the repeat times, please refer to next item: "Repeat times"
---	---

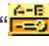

o Following-up reading

1 Repeating A-B segment.	2 Press <b>Next</b> button to enter follow-up reading menu.
3 Repeat icon "  " change to follow-up reading icon  , starting record voice, the period is the same as A-B repeat's.	4 Once finishing follow-up reading, the player play the original voice, and the icon return as before "  ". At the present, you can press <b>Next</b> button to enter comparison function.



In this situation, press **Last** button to return "A-B repeat" status.

o Comparison function

1 Enter comparison function, the icon appear as "  ". at this time, it play original voice.	2 After playing original voice, the icon change to "  ". at the same time, the player play follow-up voice.
3 The player doesn't stop the loop until you press Menu button to exit.	



In this situation, Press Last button to return "Follow function" status.



In the status above, press Menu button to exit repeat menu.

## Repeat times Play-submenu

1. Play music or recorded voice files. 2.	2 Press <b>Menu</b> button to enter Play-submenu.
--	---

3. Press <b>Next</b> button to select “Repeat times” item	4. Press <b>Menu</b> button to enter “Repeat times”.  Press Menu button again to exit.
---	--

## Repeat interval □ Play-submenu □

Refer to “Repeat times”

Set the repeat interval □ Unit: second □.

### ● Secret Space

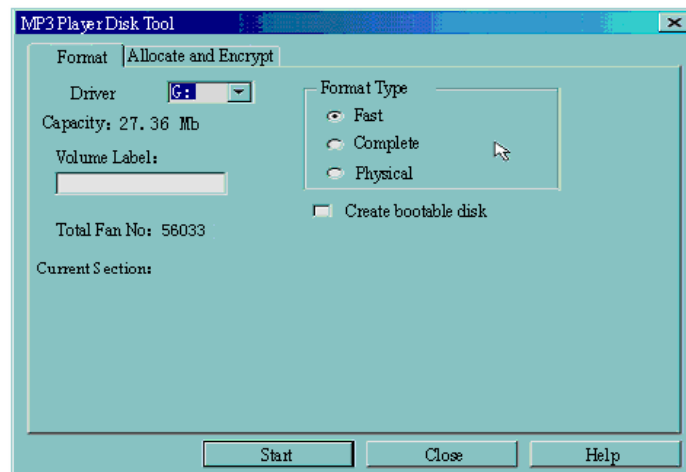
Some MP3 user may worry about divulging secret. They do not want others to find private information contained, therefore these data have to be removed before lend their own MP3 to others. It makes some trouble.

However, this problem has totally solved by ‘Secret Space’ technique!

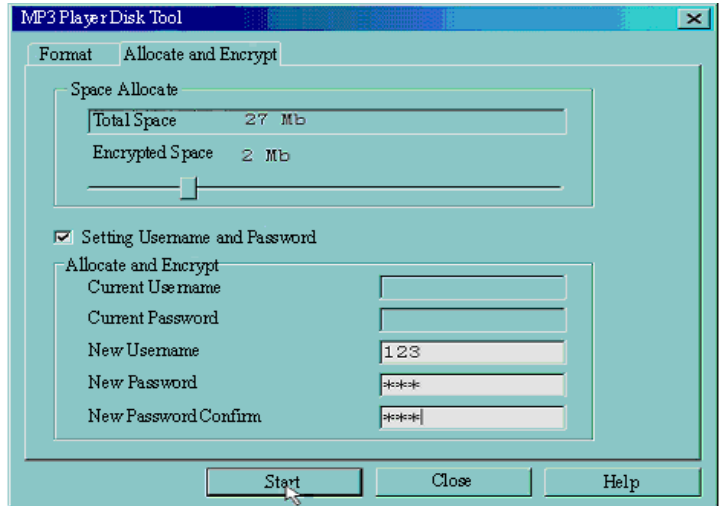
You can use provided software to divide the whole USB disk into two parts, and encrypt one of them. You can move your privacy into the encrypted part; they will be protected by password.

To active ‘Secret Space’:

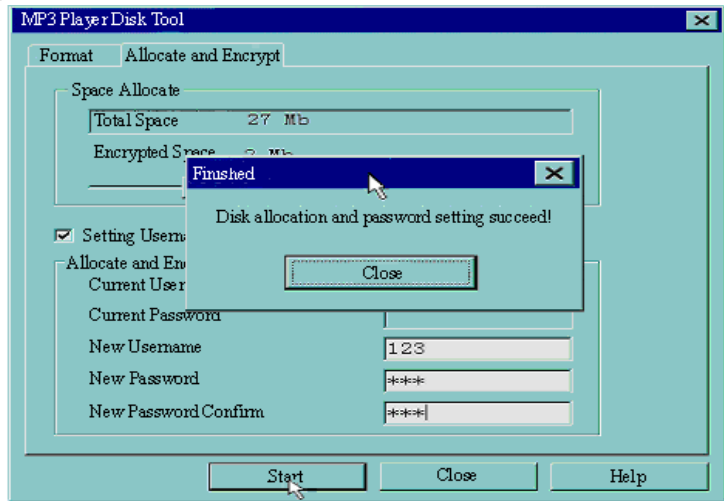
1. Connect your player to PC
2. Run *MP3 Player Disk Tool* which can be found in provided CDROM



3. Click ‘Allocation and Encrypt’ card, Allocate appropriate space and set username and password, and then click Start.

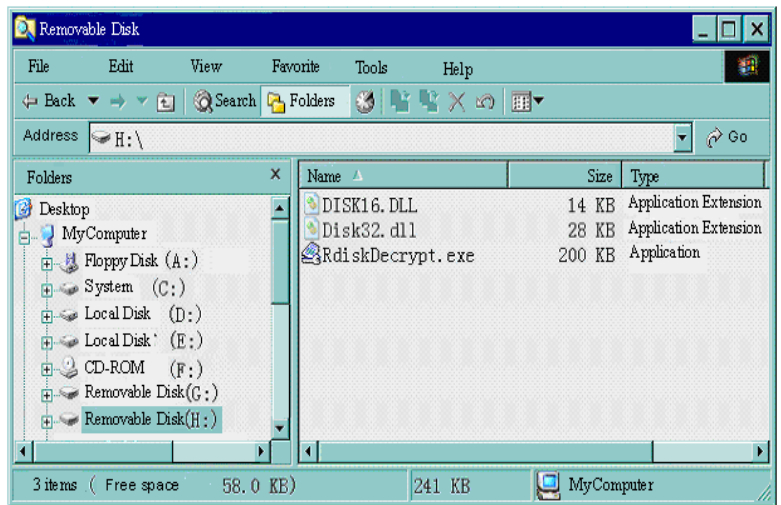


4. After space allocation, shown as below:



5. Click 'OK' to restart.

6. After restart you will find two disks (only one disk can be seen on Windows 2K SP4 or prior), click the encrypted disk (the second one), you will find three files, two are hidden, one is executable



7. Running executable file 'RdiskDecrypt.exe' and input username and password. If

all are correct, disk will be opened, and files can be copied into.



8. You must enter username and password each time access encrypted disk.



Warning: Divide one disk into parts will remove all data, and so does combine process.



Warning: Please remember username and password. If you forget it, you can only making combine processing and you will loss all encrypted data.

## Troubleshooting


No power	Check whether the player is turned ON. Check whether the battery has been charged.
No sound is heard from the earphone	Check whether the Volume is set "0" and connect the earphone plug to the jack on the player firmly. Check whether the earphone plug is dirty. Corrupt music files may make a static noise and even the sound can't be heard. Check the files.
Characters on display is corrupt	Check whether the right language has been selected.
FM radio is not clear	Adjust the position of the earphone and player. Turn off the power of other electric devices near the player. The earphone may be used as the antenna.
Can't download music files	Check whether USB cable is damaged and is connected properly. Check whether the drive programs is installed correctly. Check whether the player's memory is full.

## Specification

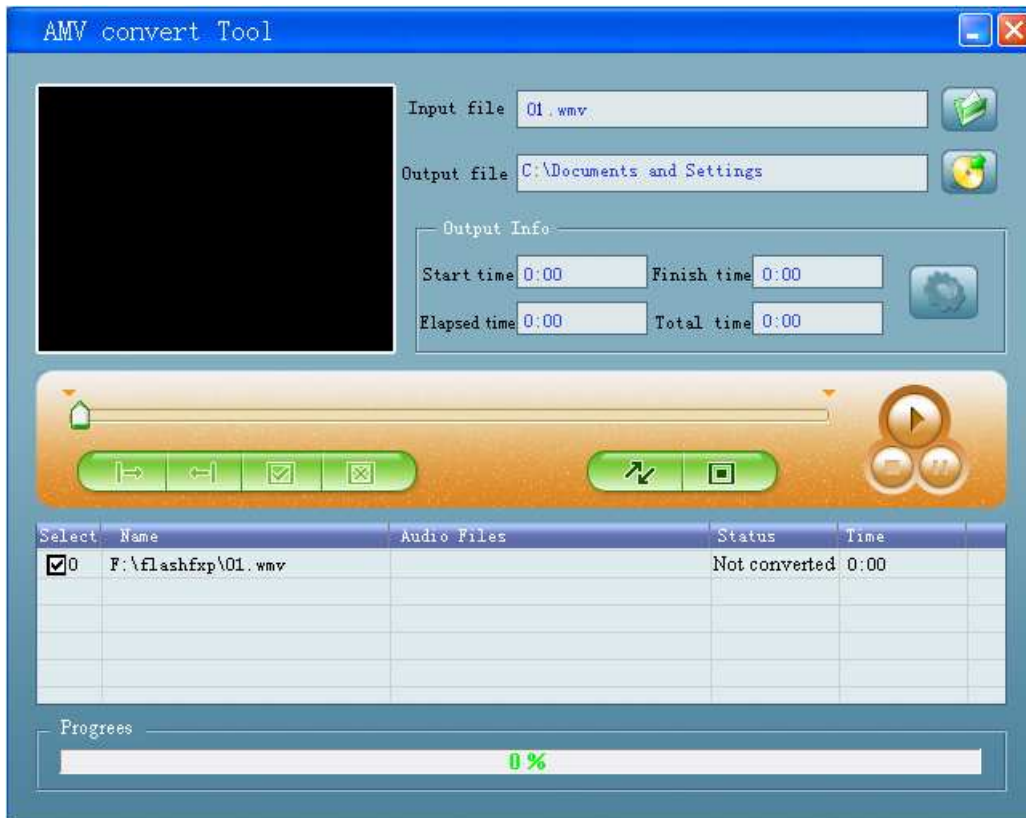
Screen	65K color TFT	
PC connection	High speed USB2.0	
Memory	Flash memory 256M-4GB	
Battery	Li-polymer	
Record	Sample rate	8KHz
	Recording format	WAV □ 32K bps □ ACT □ 8K bps □
	Recording time	35hours □ ACT □ 128M Flash □
MP3 □ WMA □ WMV □ ASF AMV	Max headphone output	□ L □ 10mW □ □ R □ 10mW □ 32Ohm □
	AMV bit rate	128K bps
	MP3 bit rate	32K bps – 448K bps
	WMA □ WMV □ ASF bit rate	5K bps – 384K bps
	Frequency response	20Hz to 20KHz
	SNR	85dB
FM Stereo Radio	Frequency range	76MHz – 90MHz / 87MHz – 108MHz
	Stations	20 / 20
	Max headphone output	□ L □ 10mW □ □ R □ 10mW □ 32Ohm □
	SNR	45dB
File Format	MP1 □ MP2 □ MP3 □ WMA □ WMV □ ASF □ WAV □ AMV	
Working Temperature	-5 to 40 Celsius degree	
Language	English, Chinese, Japanese, etc.	
Operating System	Windows98/SE/ME/2K/XP □ Mac OS 10 □ Linux 2.4.2	


## Convert Video files into AMV format ones

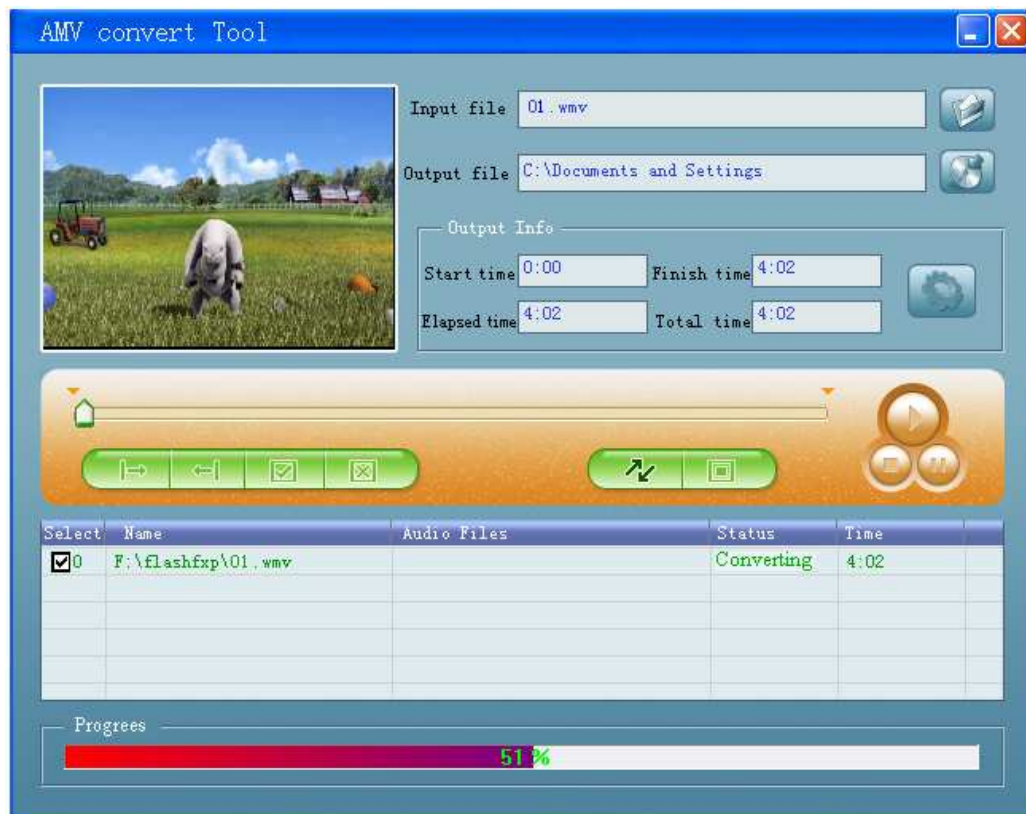
This program is used to convert video files into AMV format, currently only AMV format is supported.

- 1 □ Run “AMV Convert Tools”, click  to choose the folder where to save the AMV

files, then click  to select the folder where the original files are



Click  to start converting



3□ After convert, the AMV files will be played automatically.

